

THE STATE OF TEXAS
COUNTY OF MONTGOMERY

Know all men by these presents that **Robt. C. Mann** and **J. L. Eaton** of the County of Montgomery, State of Texas, do hereby certify that the within and foregoing plat of subdivision of land is a true and correct copy of the original plat as the same appears on file in the office of the County Clerk of Montgomery County, Texas, and that the same has been duly recorded in the office of the County Clerk of Montgomery County, Texas, and that the same is a true and correct copy of the original plat as the same appears on file in the office of the County Clerk of Montgomery County, Texas, and that the same is a true and correct copy of the original plat as the same appears on file in the office of the County Clerk of Montgomery County, Texas.

Witness my hand and seal of office, this 11th day of August, 1932.

[Signature]
County Clerk

Witness my hand and seal of office, this 11th day of August, 1932.

[Signature]
Notary Public

THE STATE OF TEXAS
COUNTY OF MONTGOMERY

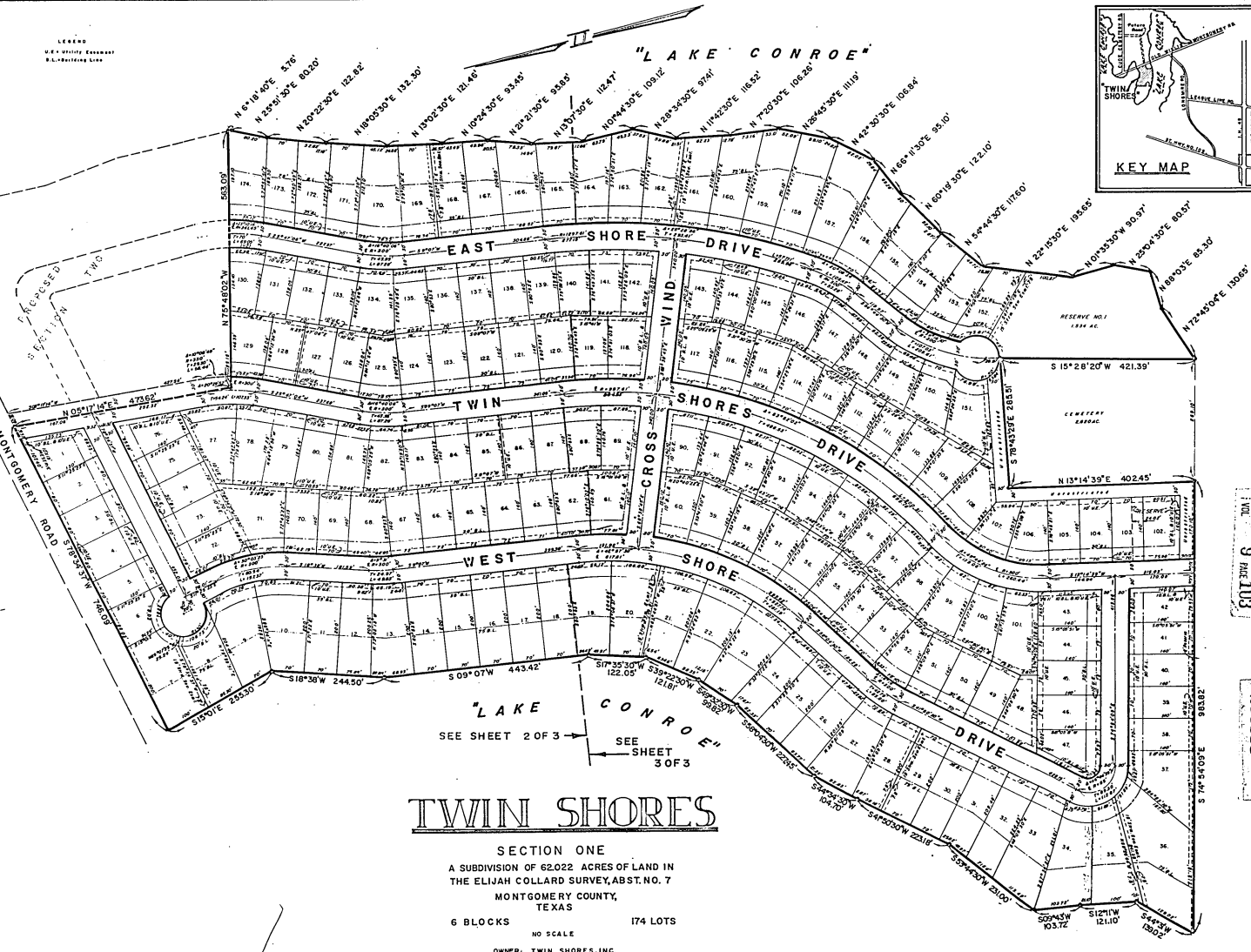
Know all men by these presents that **Robt. C. Mann** and **J. L. Eaton** of the County of Montgomery, State of Texas, do hereby certify that the within and foregoing plat of subdivision of land is a true and correct copy of the original plat as the same appears on file in the office of the County Clerk of Montgomery County, Texas, and that the same has been duly recorded in the office of the County Clerk of Montgomery County, Texas, and that the same is a true and correct copy of the original plat as the same appears on file in the office of the County Clerk of Montgomery County, Texas, and that the same is a true and correct copy of the original plat as the same appears on file in the office of the County Clerk of Montgomery County, Texas.

THE STATE OF TEXAS
COUNTY OF MONTGOMERY

Know all men by these presents that **Robt. C. Mann** and **J. L. Eaton** of the County of Montgomery, State of Texas, do hereby certify that the within and foregoing plat of subdivision of land is a true and correct copy of the original plat as the same appears on file in the office of the County Clerk of Montgomery County, Texas, and that the same has been duly recorded in the office of the County Clerk of Montgomery County, Texas, and that the same is a true and correct copy of the original plat as the same appears on file in the office of the County Clerk of Montgomery County, Texas, and that the same is a true and correct copy of the original plat as the same appears on file in the office of the County Clerk of Montgomery County, Texas.

THE STATE OF TEXAS
COUNTY OF MONTGOMERY

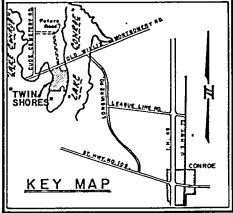
Know all men by these presents that **Robt. C. Mann** and **J. L. Eaton** of the County of Montgomery, State of Texas, do hereby certify that the within and foregoing plat of subdivision of land is a true and correct copy of the original plat as the same appears on file in the office of the County Clerk of Montgomery County, Texas, and that the same has been duly recorded in the office of the County Clerk of Montgomery County, Texas, and that the same is a true and correct copy of the original plat as the same appears on file in the office of the County Clerk of Montgomery County, Texas, and that the same is a true and correct copy of the original plat as the same appears on file in the office of the County Clerk of Montgomery County, Texas.



TWIN SHORES

SECTION ONE
A SUBDIVISION OF 62.022 ACRES OF LAND IN
THE ELIJAH COLLARD SURVEY, ABST. NO. 7
MONTGOMERY COUNTY,
TEXAS
6 BLOCKS 174 LOTS
NO SCALE
OWNER: TWIN SHORES, INC.

283555 W.L.M. + A. 52-F Vol 9 Page 103



VOL. 9 PAGE 103

283555

A0522.001
A0522.001